

Protocol Header					
4		8		12	16
IRPD		Packet Length			
Version/Protocol ID Extension			ID Length		
R	R	R	PDU Type		
Reserved			Maximum Area Addresses		
Type			Length		
Value ...					
Additional TLVs ...					

Attributes	
Type	Link-State
Algorithm	Dijkstra
Metric	Default (10)
AD	115
Standard	ISO 10589
Protocols	IP, CLNS
Transport	CLNP
Authentication	Plaintext, MD5

NSAP Addressing				
Relevance	Interdomain Part		Domain Specific Part	
NSAP	AFI	IDI	HODSP	System ID
Example	47	0005.80ff.f800.0000	0001	0000.0c00.1234
Condensed	Area		System ID	SEL

Routing Levels	
Level 0	Used to locate end systems
Level 1	Routing within an area
Level 2	Backbone between areas
Level 3	Inter-AS routing

Interdomain Part (IDP) · Portion of the address used in routing between autonomous systems; assigned by ISO

Domain Specific Part (DSP) · Portion of the address relevant only within the local AS

Authority and Format Identifier (AFI) · Identifies the authority which dictates the format of the address

Initial Domain Identifier (IDI) · An organization belonging to the AFI

High Order DSP (HODSP) · The area within the AS

System ID · Unique router identifier; six bytes for Cisco devices; often taken from a MAC address

NSAP Selector (SEL) · Identifies a network layer service; always 0x00 in a NET address

Terminology

Type-Length-Value (TLV) · Variable length modular datasets

Link State PDU (LSP) · Carry TLVs describing link state information

Sequence Number Packet (SNP) · Used to request and advertise LSPs; can be complete (CSNP) or partial (PSNP)

Hello Packet · Establish and maintain neighbor adjacencies

Designated Intermediate System (DIS) · A pseudonode responsible for emulating point-to-point links across a multiaccess segment

Network Types

Broadcast Point-to-Point Other

DIS Elected	Yes	No	<i>Must be configured as broadcast or point-to-point</i>
Neighbor Discovery	Yes	Yes	
Hello/Dead Timers	10/30	10/30	

Adjacency Requirements

- Interface MTUs must match
- Levels must match
- Areas must match (if level 1)
- System IDs must be unique
- Authentication must succeed

Troubleshooting

show ip route	show isis spf-log
show ip protocols	debug isis spf-events
show clns isis neighbor	debug isis adjacencies-packets
show clns isis interface	debug isis spf-statistics
show isis database	debug isis update-packets

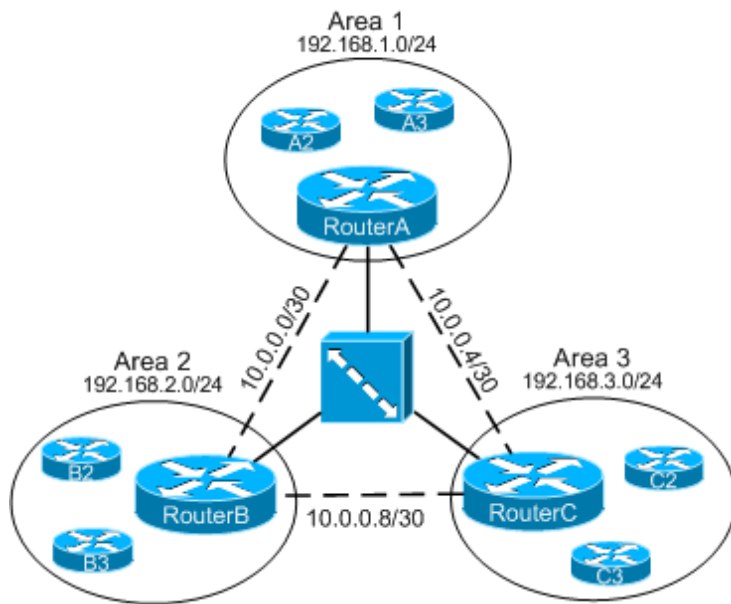
DIS Election

- Highest interface priority elected
- Highest SNPA (MAC/DLCI) breaks tie
- Highest system ID breaks SNPA tie
- Default interface priority is 64
- Current DIS may preempted

TLV Types

Name	Use	Name	Use	Name	Use
1 Area Addresses	Hello, LSP	6 IS Neighbors	Hello	128 IP Internal Reachability	LSP
2 IS Neighbors	LSP	8 Padding	Hello	129 Protocols Supported	Hello
3 ES Neighbors	L1 LSP	9 LSP Entries	SNP	131 IDRP	L2 LSP
5 Prefix Neighbors	L2 LSP	10 Authentication	Hello, LSP, SNP	132 IP Interface Address	Hello, LSP

Configuration Example



RouterA2

```
interface FastEthernet0/0
description Area 1
ip address 192.168.1.2 255.255.255.0
ip router isis
isis circuit-type level-1
!
router isis
net 49.0001.0000.0000.00a2.00
!
```

RouterB2

```
interface FastEthernet0/0
description Area 2
ip address 192.168.2.2 255.255.255.0
ip router isis
isis circuit-type level-1
!
router isis
net 49.0002.0000.0000.00b2.00
!
```

RouterA1

```
interface FastEthernet0/0
description Area 1
ip address 192.168.1.1 255.255.255.0
ip router isis
isis circuit-type level-1
!
interface Serial1/0
no ip address
encapsulation frame-relay
!
interface Serial1/0.1 point-to-point
description To Area 2
ip address 10.0.0.1 255.255.255.252
ip router isis
isis circuit-type level-2-only
! MD5 authentication (keychain not shown)
isis authentication mode md5
isis authentication key-chain keychain
frame-relay interface-dlci 101
!
interface Serial1/0.2 point-to-point
description To Area 3
ip address 10.0.0.5 255.255.255.252
ip router isis
isis circuit-type level-2-only
frame-relay interface-dlci 102
!
router isis
net 49.0001.0000.0000.00a1.00
```

RouterB1

```
interface FastEthernet0/0
description Area 2
ip address 192.168.2.1 255.255.255.0
ip router isis
isis circuit-type level-1
!
interface Serial1/0
no ip address
encapsulation frame-relay
!
interface Serial1/0.1 point-to-point
description To Area 1
ip address 10.0.0.2 255.255.255.252
ip router isis
isis circuit-type level-2-only
! MD5 authentication (keychain not shown)
isis authentication mode md5
isis authentication key-chain keychain
frame-relay interface-dlci 101
!
interface Serial1/0.2 point-to-point
description To Area 3
ip address 10.0.0.9 255.255.255.252
ip router isis
isis circuit-type level-2-only
frame-relay interface-dlci 103
!
router isis
net 49.0002.0000.0000.00b1.00
```